

Professional Services Guide

To Advertise in the Classified Section contact **Sam Ridley** - Telephone: 020 7562 4386 or email Sam.Ridley@perspectivepublishing.com



PENSIONS^{Age}

Perspective Publishing

Sixth floor, 3 London Wall Buildings, London, EC2M 5PD

▶ To Advertise in the Classified Section contact **Sam Ridley** - Telephone: 020 7562 4386 or email Sam.Ridley@perspectivepublishing.com

BULK ANNUITIES



MetLife Assurance Limited
15 Bedford Street
London
WC2E 9HE

Dan Cradock
Business Development Manager
dcradock@metlife.com
+44 (0)20 7557 4915

Pension risk management: it's about time...

MetLife Assurance Limited is a specialist provider of bulk annuity solutions for occupational pension schemes in the UK and Ireland. We have the experience, knowledge and financial stability to lead you through the challenges to create a robust, cost-effective solution that meets your individual needs. In the UK, MetLife Assurance Limited is authorised by the Prudential Regulation Authority and regulated by the Financial Conduct Authority and the Prudential Regulation Authority.

COMMUNICATIONS

PENSION COMMUNICATIONS WITH A REAL FOCUS

See pensions through the eyes of members to achieve above average industry levels of engagement



01883 342682 | www.ferrierpearce.com

Contact diane@ferrier-pearce.co.uk to refocus your comms



Because pensions are all about people



- Administration
- Communications
- Trustee Services

t: 01325 744712

e: sales@rpmi.co.uk

www.rpmi.co.uk

twitter: @RPMIpensions

PA2013

DATA ADMINISTRATION

ITM

Solution delivered...

Specialist provider of data, administration consulting and IT support services.

- ▶ Data auditing and management
- ▶ De-risking and buy-outs
- ▶ Data cleansing and benefit/GMP rectification
- ▶ Legacy and new systems migration
- ▶ Data and administration consulting

And a suite of leading systems

For more information, please contact John Broker on: 020 7648 9990 johnbroker@itmlimited.com



PenScope
Pensions administration



eAsE
Auto Enrolment middleware



eDAaRT
Migration and risk audit



eMember
Member benefit access



eArchive
Archiving and record keeping



ePortal
Employer and administrator access

Data | Systems | Consultancy

www.itmlimited.com

FIDUCIARY MANAGEMENT



MN
60 Cannon Street
London EC4N 6NP
United Kingdom

Contact: Christy Jesudasan
Senior Client Director
T +44 (0)207 002 1422
D +44 (0)207 002 1414
M +44 (0)7825 277 713
E christy.jesudasan@mn-services.co.uk
W www.mn-services.co.uk

About MN

With more than 65 years experience and £80 billion in pension fund assets under management, MN is a leading provider of fiduciary management services across the UK and Europe.

Wholly owned by pension schemes, we are uniquely placed as a strategic partner for trustees and corporate sponsors in the development, implementation and monitoring of their investment strategy relative to their liabilities.

Our clients choose us because of our scale, alignment, focus and expertise.

MULTI MANAGERS



FUNDQUEST
BNP PARIBAS GROUP

FundQuest UK Limited
5 Aldermanbury Square
London EC2V 7BP
United Kingdom
Tel: +44 (0) 207 595 2000
Fax: +44 (0) 207 063 7092
Web: www.fundquest.com

UK Chief Executive Officer:
Antony John

FundQuest is the specialist multi-manager arm of BNP Paribas Investment Partners, one of the largest asset managers in the world, and among the top five in Europe. Our team and investment process has been consistently rated by independent researchers for over a decade.

FundQuest's proprietary research process combines dynamic asset allocation, open architecture manager selection, disciplined portfolio construction and risk management to create manager of managers, fund of funds and multi-asset portfolios to provide innovative solutions to a wide range of clients, including pension funds, asset managers and insurance companies.



PENSIONS^{Age} Perspective Publishing

Sixth floor, 3 London Wall Buildings, London, EC2M 5PD

To Advertise in the Classified Section contact **Sam Ridley** - Telephone: 020 7562 4386 or email Sam.Ridley@perspectivepublishing.com

PENSIONS ADMINISTRATORS

CAPITA

Listen. Create. Deliver.

At Capita Employee Benefits we are inquisitive. We make it our business to transform your performance and compliance with innovative data and tracing solutions.

T 020 7620 8000

E pensions@capita.co.uk

W www.capita.co.uk/employeebenefits

f facebook.com/CapitaEmployeeBenefits

@Capita_EB



Third party Administrator



Partners in pensions administration

So what can THPA offer you and your members?

- An innovative fee basis that remove the traditional barriers for changing administrator and reduces ongoing costs
- An experienced team focused on delivering customer driven services
- The latest web-based technology that provides real-time benefits modelling and control over data
- A comprehensive implementation process that mitigates risk and cements the ongoing service

david.carstairs@thpa.co.uk | +44(0)20 7330 0708 | www.thpa.co.uk



TRAFALGAR HOUSE
PENSIONS ADMINISTRATION LIMITED

HS Admin are one of the leading Pension Administration specialists and are committed to providing the highest quality services to our clients & scheme members.

Our services include:

- Scheme Administration, Pensioner Payroll, Accounting & Treasury
- Trustee Secretarial
- Scheme Wind-ups
- Data Audit and Cleanse
- Project Management



Contact: Graham Hickling

Tel: 0151 448 5415

Email: enquiries@hsadmin.com

Web: www.hsadmin.com

Simply scan this code with your SMARTphone to find out more about HS Admin & our services



HS Admin, 25 Goodlass Road, Speke, Liverpool, L24 9HJ



Because pensions are all about people

- Engaging
- Innovative
- Relevant



FINANCIAL NEWS AWARDS FOR EXCELLENCE IN INSTITUTIONAL PENSIONS EUROPE 2012 WINNER

t: 01325 744712 e: sales@rpmico.uk www.rpmico.uk

trust quality service

Technology and Administration Solutions

Embracing technology and flexibility to deliver

- Global administration solutions
- Market leading online tools
- Flexible benefits administration and total rewards statements

Towers Watson is represented in the UK by Towers Watson Limited and Towers Watson Capital Markets Limited. Copyright © 2012 Towers Watson. All rights reserved. TW-EU-2012-25943. May 2012.

TOWERS WATSON

towerswatson.com

Westgate, 120-130 Station Road, Redhill, Surrey, RH1 1WS
T +44 1737 241144 F +44 1737 241496

Clive Witherington
+44 1737 273860
clive.witherington@towerswatson.com

Steve Kortens
+44 1737 273898
stephen.kortens@towerswatson.com

PENSIONS ADMINISTRATORS



Celebrating 176 years of making payments. Today we serve 3 million scheme members in the public and private sector.

To find out more about our innovative and reliable pensions, payroll and annuity administration solutions call 01293 604 949 or email sales@equiniti.com.



PENSIONS ADMINISTRATION SYSTEMS



aquilaheywood
Aquila House, 35 London Road
Redhill, Surrey RH1 1NJ

Contact: Chris Connelly
Tel: 01737 859859
Email: marketing@aquilaheywood.co.uk
Web: www.aquilauk.co.uk
Web: www.heywood.co.uk

Expertise - Quality - Delivery
aquilaheywood, comprising *aquila* and *heywood*, is the leading supplier of pensions administration software solutions in the UK. We have a strong presence across all sectors of the pensions market with unparalleled product coverage:

- 200 clients
- 48 of the 100 largest schemes in the UK
- Number one provider to the public sector
- Pension schemes for over 10 million members are run using our systems
- DB, CARE, DC, Hybrid, Group and Individual pensions



Contact Details
Ian Dowler or Steven Donkin
Procentia Limited,
1 Riverside Court,
Riverside Road,
BATH. BA2 3DZ.
www.procentia.co.uk
enquires@procentia.co.uk
01225 444818

One Vision • One System • One Choice

IntelliPen is an innovative benefit administration system designed to support a modern pensions office, including workflow and automation of pension processes. Built upon our proven IntelliSite and IntelliCalcs™ framework, IntelliPen uses industry standard technologies to create a flexible thin-client solution that is both powerful and easy to use

Visit our website at www.procentia.co.uk for more information on our products and services

PENSION CONSULTANTS, ACTUARIES AND ADMINISTRATORS

Premier Pensions Management Ltd
Corinthian House
17 Lansdowne Road
Croydon CR0 2BX

t: +44 (0)20 8663 5800
f: +44 (0)20 3014 8768
e: info@premiercompanies.co.uk

premier see change

Our Vision - At Premier we believe in actions not just warm words. It's what makes us different and the reason why our clients don't just hear about change but actually see it happen.

premiercompanies.co.uk 020 8663 5800

TRACING COMPANIES

National Fraud Initiative (NFI)



Audit Commission
3rd Floor, Fry Building 2 Marsham
Street London, SW1P 4DF

Contact: Nathan Nash
Email: nfiqueries@audit-commission.gsi.gov.uk
Tel: 0303 444 8322

www.audit-commission.gov.uk/nfiprivatepensions

We have 17 years experience of running the National Fraud Initiative (NFI), an electronic data matching system aimed at preventing and detecting fraud. A cornerstone of the NFI is its proven, flexible and cost effective mortality screening service that helps public and private sector pension schemes identify deceased members where pension is still in payment.

The NFI mortality screening service...an essential tool to help pension schemes prevent, detect and recover overpayments of pension.

TRACING COMPANIES

CAPITA

Listen. Create. Deliver.

At Capita Employee Benefits we are inquisitive. We make it our business to transform your performance and compliance with innovative data and tracing solutions.

T 020 7620 8000

E pensions@capita.co.uk

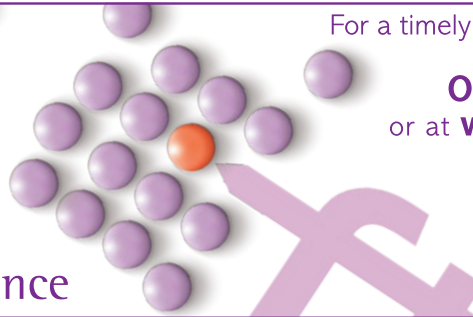
W www.capita.co.uk/employeebenefits

f [facebook.com/CapitaEmployeeBenefits](https://www.facebook.com/CapitaEmployeeBenefits)

t @Capita_EB



Life and Pensions
spot-on...
smart solutions for
tracing missing members
and record-keeping compliance



For a timely **data health check-up**,
get in touch today on
020 8667 2444
or at **www.ftb-ltd.com**



The Pension Member Tracing Specialist

Trace • Screen • Cleanse

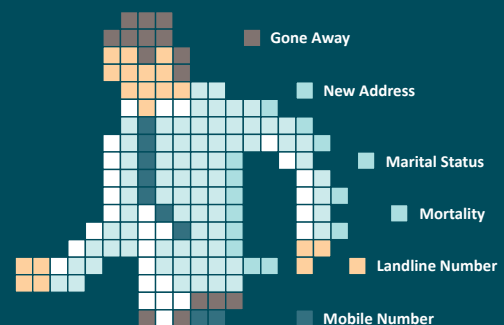


0844 576 8080 www.targetprofessional.co.uk info@targetprofessional.co.uk

Keep up with your members' data

Ensure your data complies with the Pensions Regulator's record-keeping guidelines. We provide **existence checks**, **tracing** and **marital status appending** to mitigate the inherent risks prevalent within your database - [contact us today](#)

▶ **tracesmart**[®]



T 029 2067 8510
E lapinfo@tracesmart.co.uk
www.tracesmart.co.uk